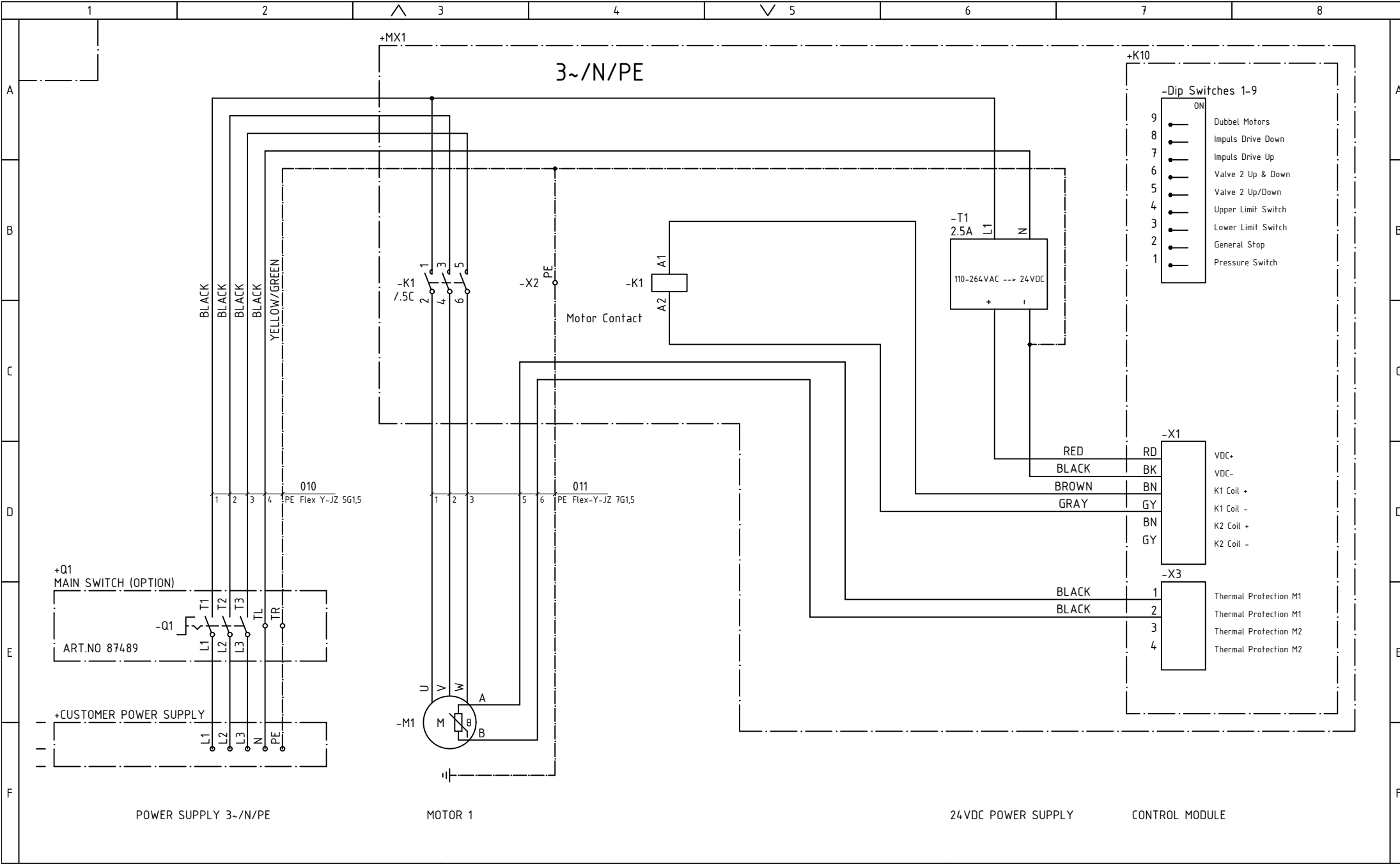
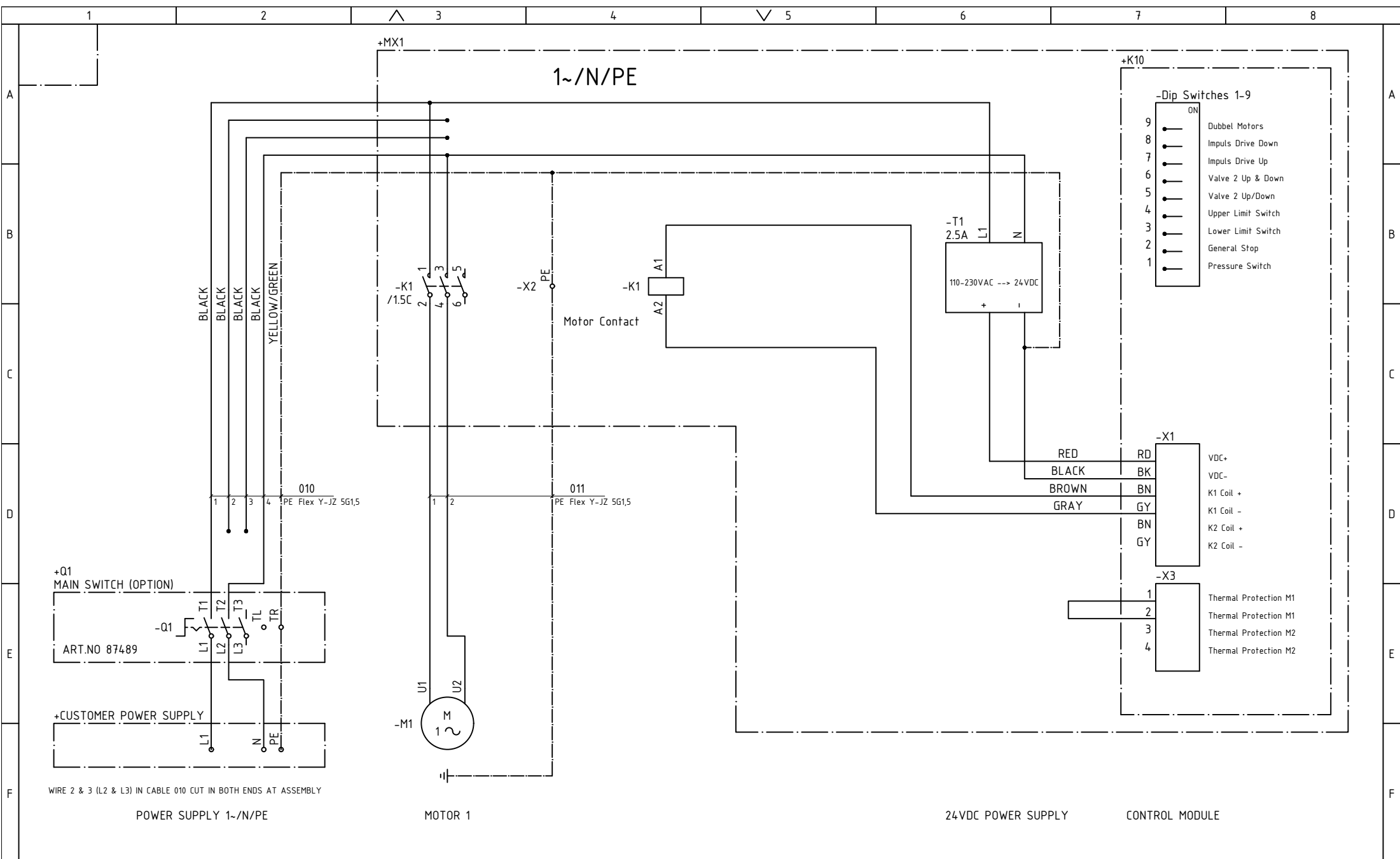


		Originator KRHT		Based on		Plant owner's document number			
		Approved by		Replaces 613240		Document designation 1108415		Date 2015-04-24	
D		ADDED TEXT		KH		160907		Approved date	
Designation		Description		Signature		Date		Status	
								Cover Sheet ELECTRIC BOX BASIC EDITION	
								Document number 1108415	
								Rev. E	
								Sheet no. 1	
								Next sh. 1	
								No. of sh. 11	



E		ADDED OPTION FOR MAIN SWITCH	KH	161102	Originator KRHT	Based on 3~/N/PE ELECTRIC BOX BASIC EDITION	Plant owner's document number				
					Approved by	Replaces 613240	Document designation 1108415	Date 2015-06-03			
					Approved date	Status	Document number 1108415	Rev. E	Sheet no. 1	Next sh. 2	No. of sh. 11



WIRE 2 & 3 (L2 & L3) IN CABLE 010 CUT IN BOTH ENDS AT ASSEMBLY

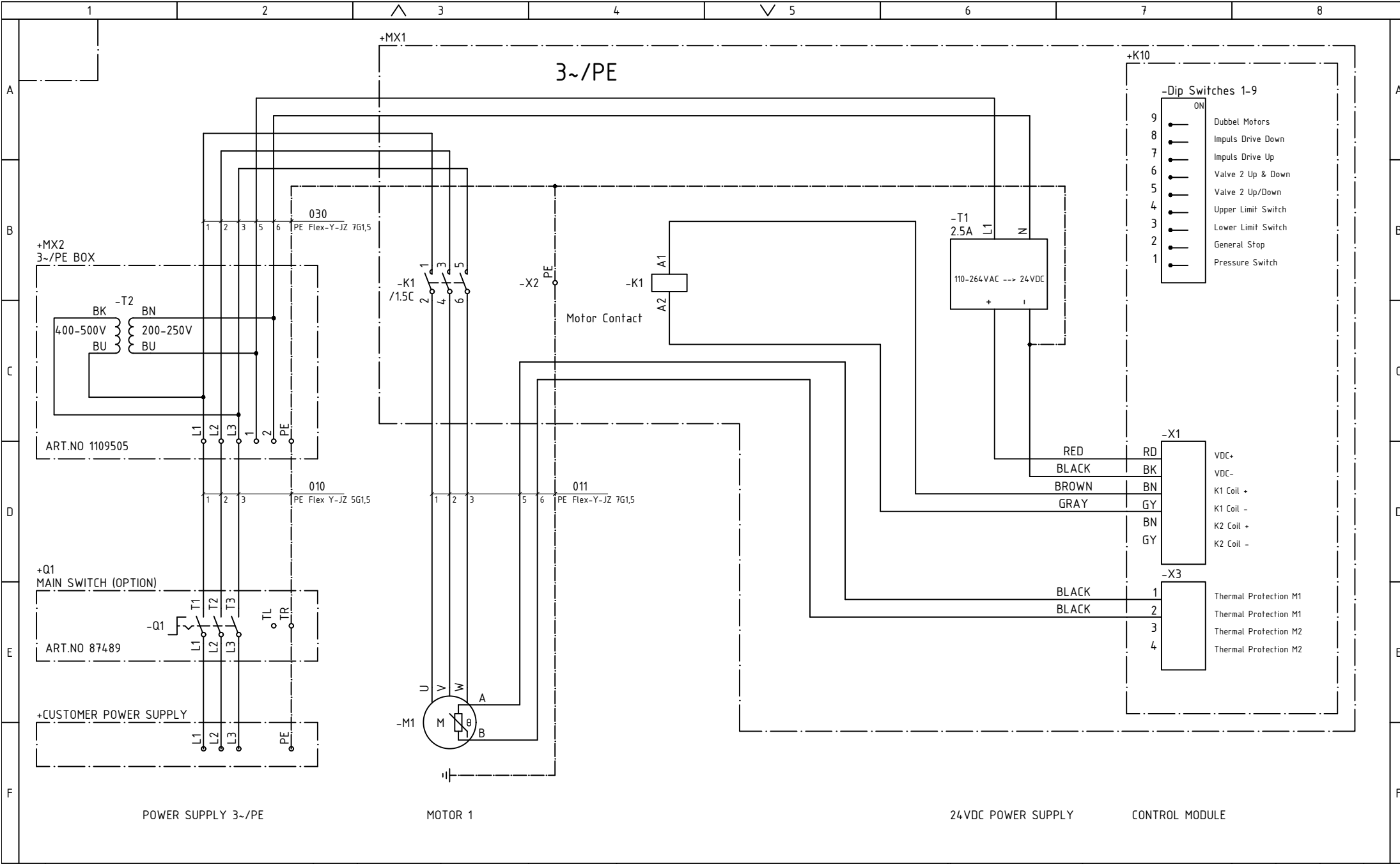
POWER SUPPLY 1~/N/PE

MOTOR 1

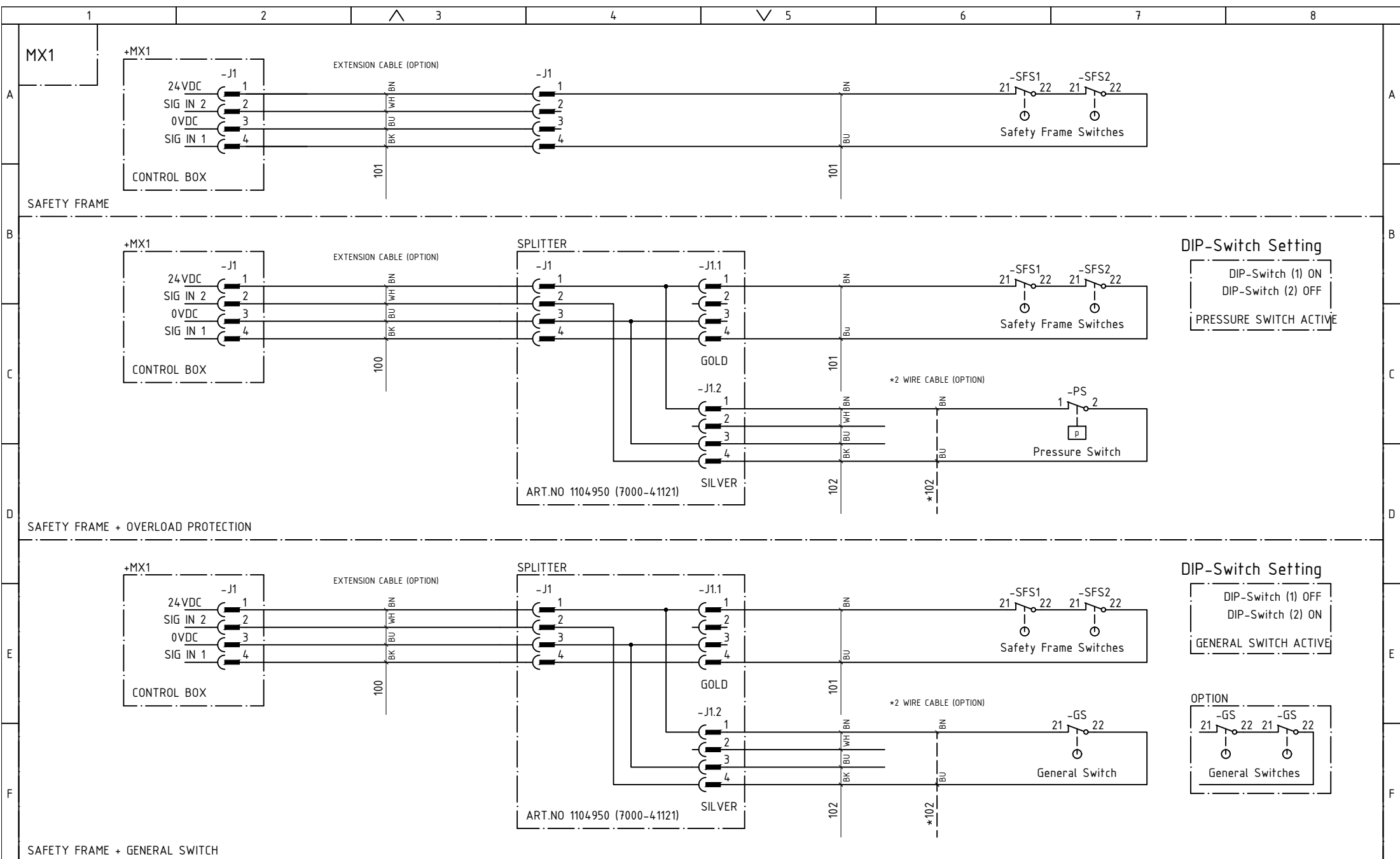
24VDC POWER SUPPLY

CONTROL MODULE

E	ADDED OPTION FOR MAIN SWITCH	KH	161102	Originator KRHT	Based on	1~/N/PE ELECTRIC BOX BASIC EDITION	Plant owner's document number					
				Approved by	Replaces 613240		Document designation 1108415	Date 2015-06-03				
				Approved date	Status		Document number 1108415	Rev. E	Sheet no. 2	Next sh. 3	No. of sh. 11	
	Designation	Description	Signature	Date								



E		ADDED OPTION FOR MAIN SWITCH	KH	161102	Originator	KRHT	Based on	3~/PE	Plant owner's document number				
B		UPDATE CABLE 030	KH	150922	Approved by		Replaces	ELECTRIC BOX BASIC EDITION	Document designation	Date			
A		ADDED TEXT	KH	150911	Approved date		Status		1108415	2015-09-22			
Designation		Description	Signature	Date	Signature	Date	Status		Document number	Rev.	Sheet no.	Next sh.	No. of sh.
				✓					1108415	E	3	4	11



DIP-Switch Setting

DIP-Switch (1) ON
 DIP-Switch (2) OFF

PRESSURE SWITCH ACTIVE

DIP-Switch Setting

DIP-Switch (1) OFF
 DIP-Switch (2) ON

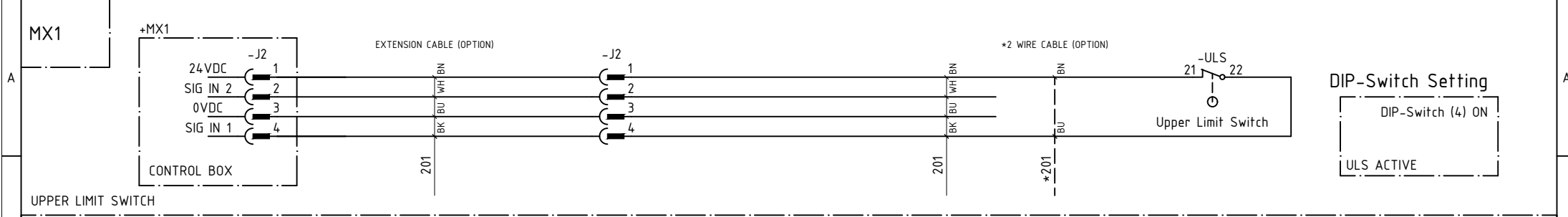
GENERAL SWITCH ACTIVE

OPTION

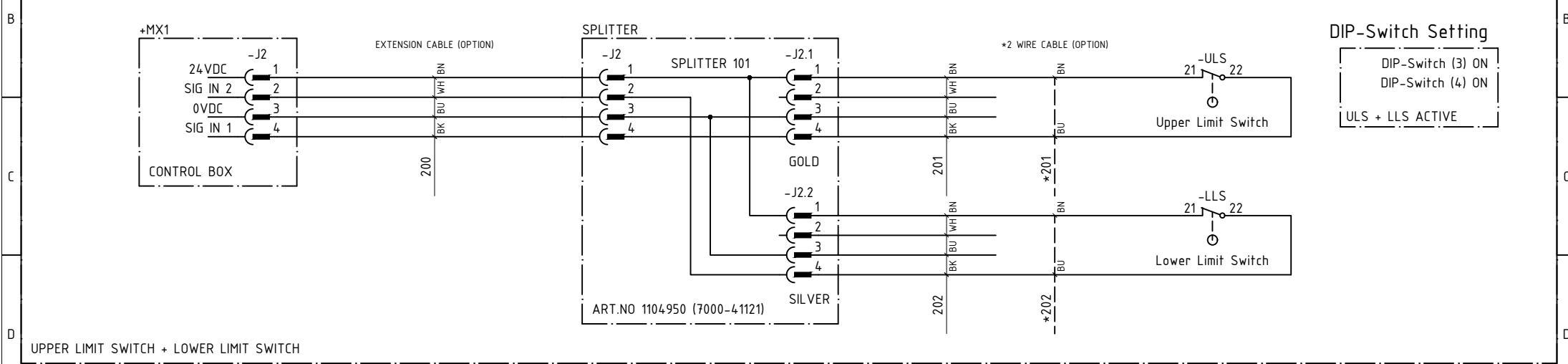
-GS
 -GS

General Switches

Designation		Description		Signature	Date	Originator KRHT	Based on	J1 Conection ELECTRIC BOX BASIC EDITION	Plant owner's document number						
						Approved by	Replaces 613240		Document designation 1108415	Date 2015-04-24					
						Approved date	Status		Document number 1108415	Rev. E	Sheet no. 4	Next sh. 5	No. of sh. 11		



DIP-Switch Setting
 DIP-Switch (4) ON
 ULS ACTIVE

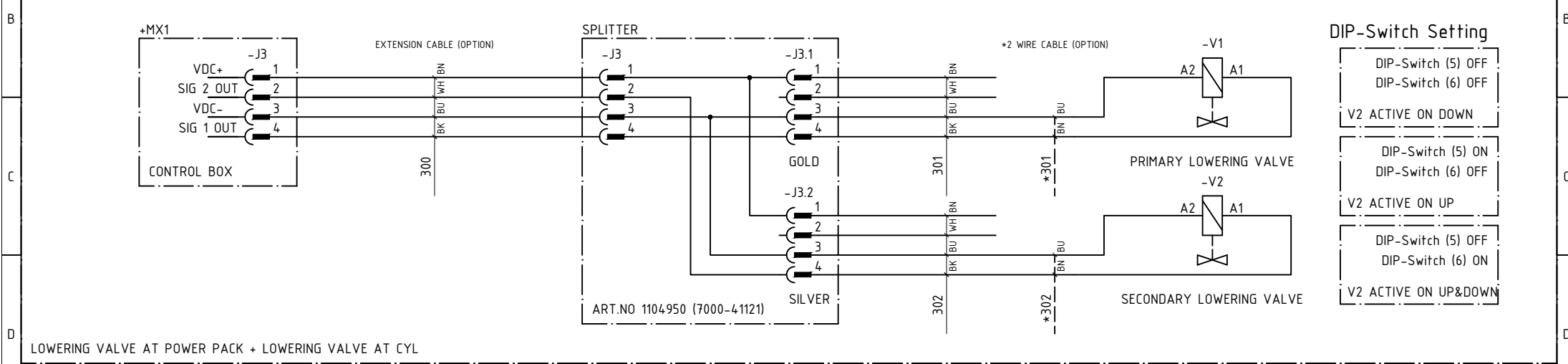
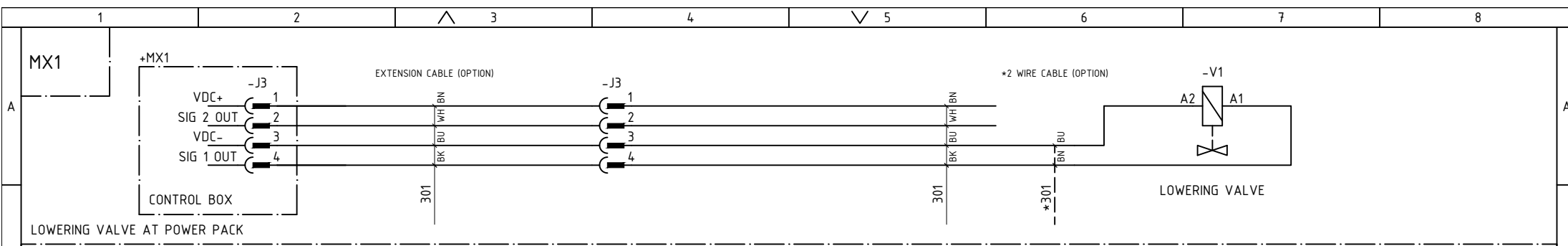


DIP-Switch Setting
 DIP-Switch (3) ON
 DIP-Switch (4) ON
 ULS + LLS ACTIVE

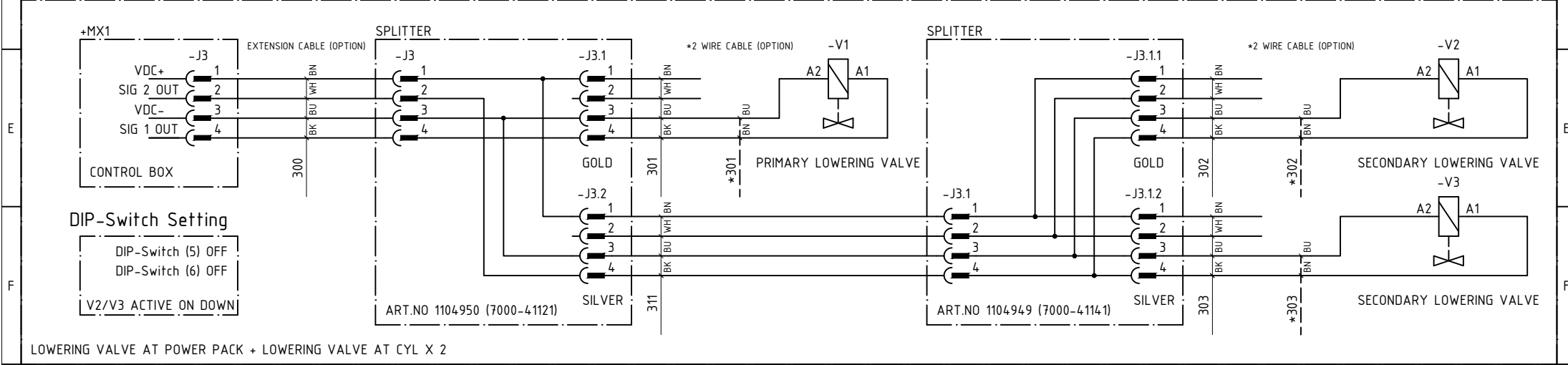
E

F

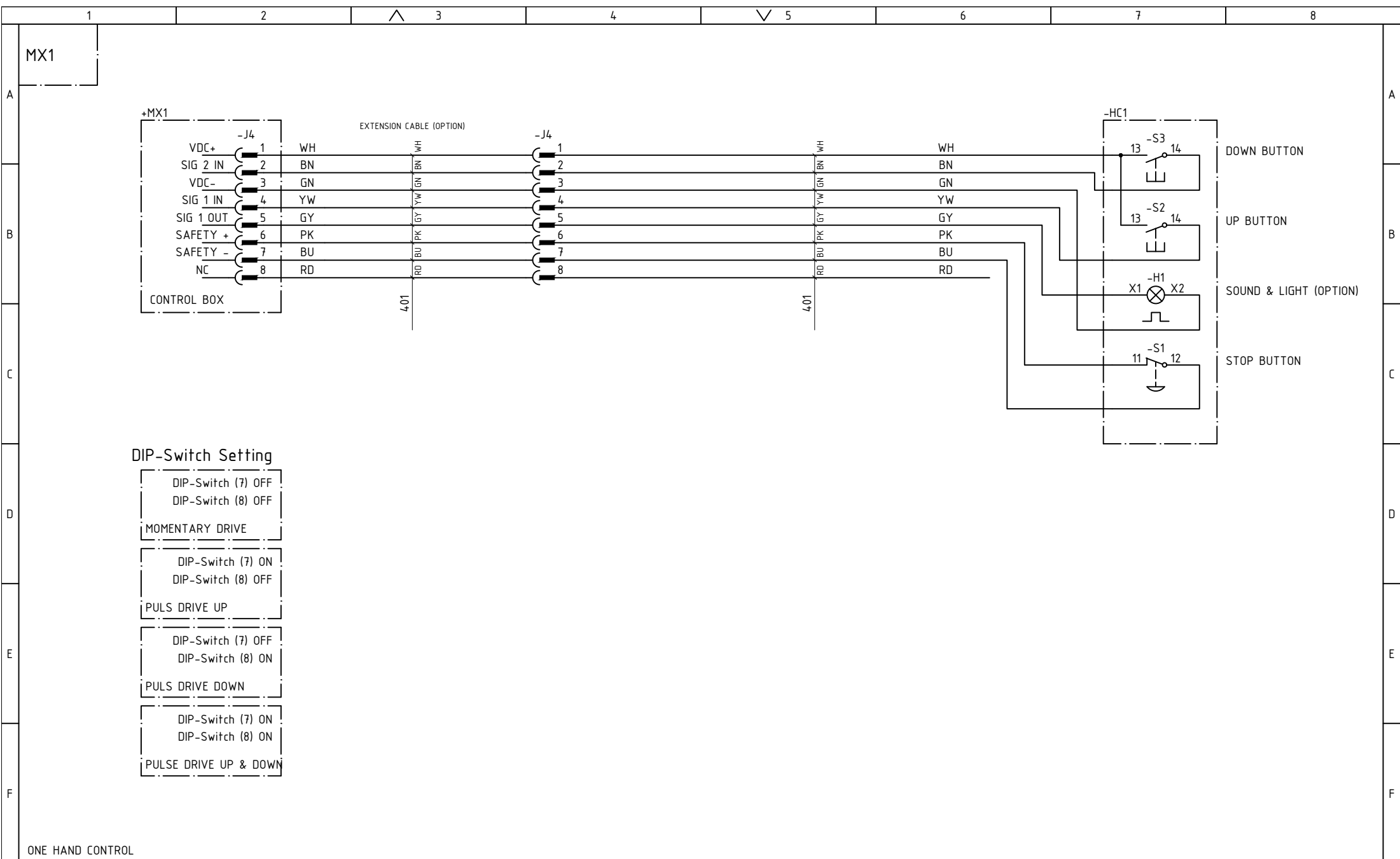
Designation		Description		Signature	Date	Originator KRHT	Based on	J2 Conection ELECTRIC BOX BASIC EDITION	Plant owner's document number				
						Approved by	Replaces 613240		Document designation 1108415	Date 2015-04-24			
						Approved date	Status		Document number 1108415	Rev. E	Sheet no. 5	Next sh. 6	No. of sh. 11



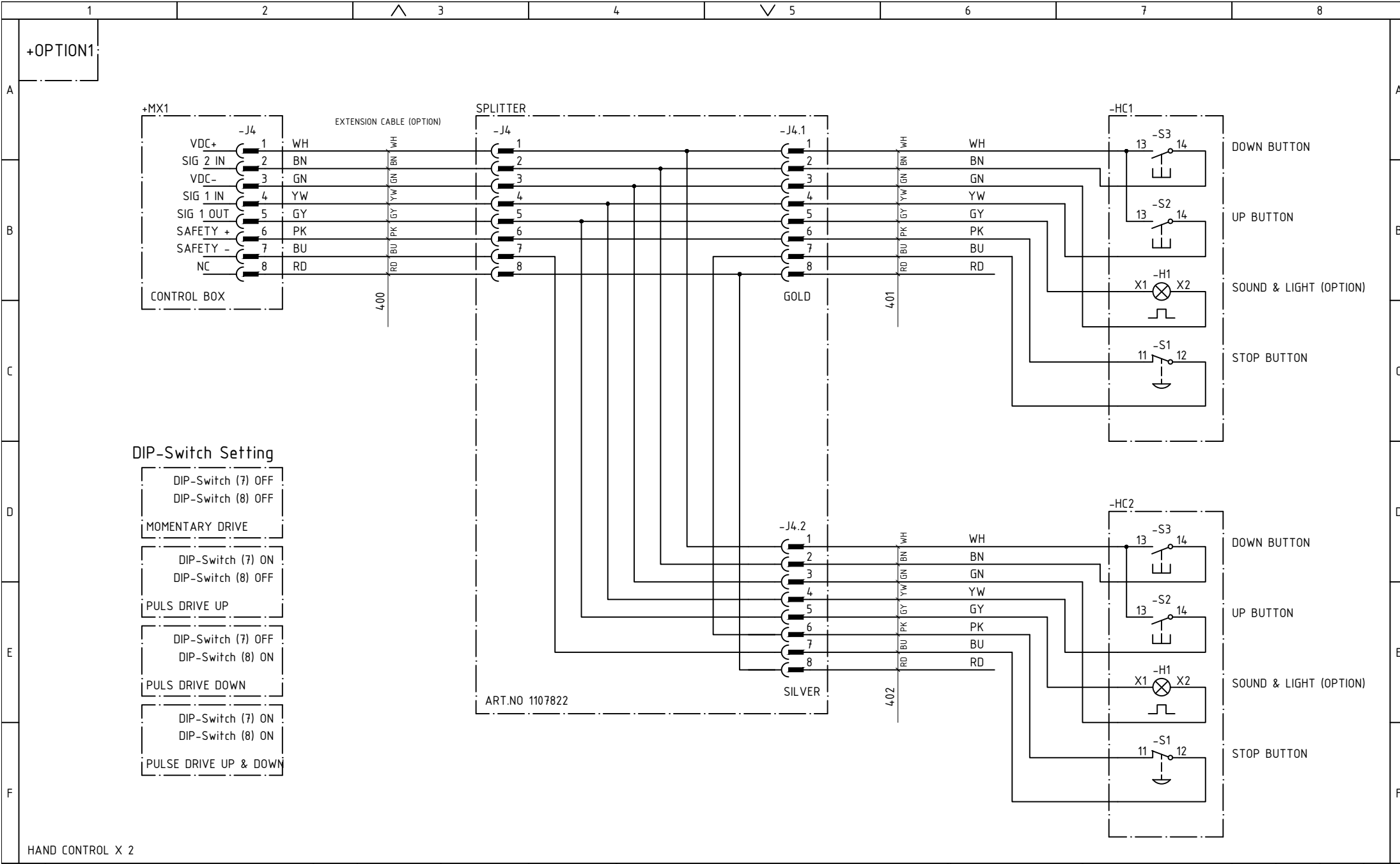
- DIP-Switch Setting**
- DIP-Switch (5) OFF
DIP-Switch (6) OFF
V2 ACTIVE ON DOWN
 - DIP-Switch (5) ON
DIP-Switch (6) OFF
V2 ACTIVE ON UP
 - DIP-Switch (5) OFF
DIP-Switch (6) ON
V2 ACTIVE ON UP&DOWN



Originator KRHT	Based on	J3 Conection ELECTRIC BOX BASIC EDITION		Plant owner's document number			
Approved by	Replaces 613240			Document designation 1108415	Date 2015-04-24		
Approved date	Status			Document number 1108415	Rev. E	Sheet no. 6	Next sh. 7
Designation	Description	Signature	Date				No. of sh. 11



Originator	Based on	J4 Conection ELECTRIC BOX BASIC EDITION	Plant owner's document number				
KRHT			Document designation		Date		
Approved by	Replaces		1108415	2015-04-24			
	613240		Document number	Rev.	Sheet no.	Next sh.	No. of sh.
Approved date	Status		1108415	E	7	8	11



Originator KRHT	Based on	J4 Conection ELECTRIC BOX BASIC EDITION	Plant owner's document number				
Approved by	Replaces 613240		Document designation 1108415	Date 2015-04-24			
Approved date	Status		Document number 1108415	Rev. E	Sheet no. 8	Next sh. 9	No. of sh. 11

A
B
C
D
E
F

Status indication (green light)

1	Status "OK"	Indicates, with a steady signal, when the system is OK and no faults are detected.
---	-------------	--

Status indication (yellow light)

1	Emergency stop	Indicates, with a steady signal, when the emergency stop is activated.
---	----------------	--

Status indication (yellow flashes)

1	Upper limit switch	Indicates (one yellow flash) when the upper limit switch and the up signal are activated simultaneously.
2	Lower limit switch	Indicates (two yellow flashes) when the lower limit switch and the down signal are activated simultaneously.
3	General limit switch	Indicates (three yellow flashes) when the general limit switch and the up or down signal are activated simultaneously.

Alarms (red flashes)

1	Pressure switch	Indicates when pressure switch and the upper limit switch is activated at the same time and the configuration fore pressure switch is activated.
2	Safety frame switches	Indicates when one of the safety frame switches is activated until its reset by the up signal.
3	Push button check	Indicates when up or down button is activated during power up.
4	Motor overheated	Indicates when one of the temperature switches/sensors is activated. Indicates until it will be reset by the up signal and the temperature is decreased
8	Configuration fault	Indicates (eight red flashes) when one of the dip switches not correspond to or interfere with another dip switch setting.

Alarms (push button box) is optional

1	General alarm	Indicates, with a steady signal if any alarm is activated.
---	---------------	--